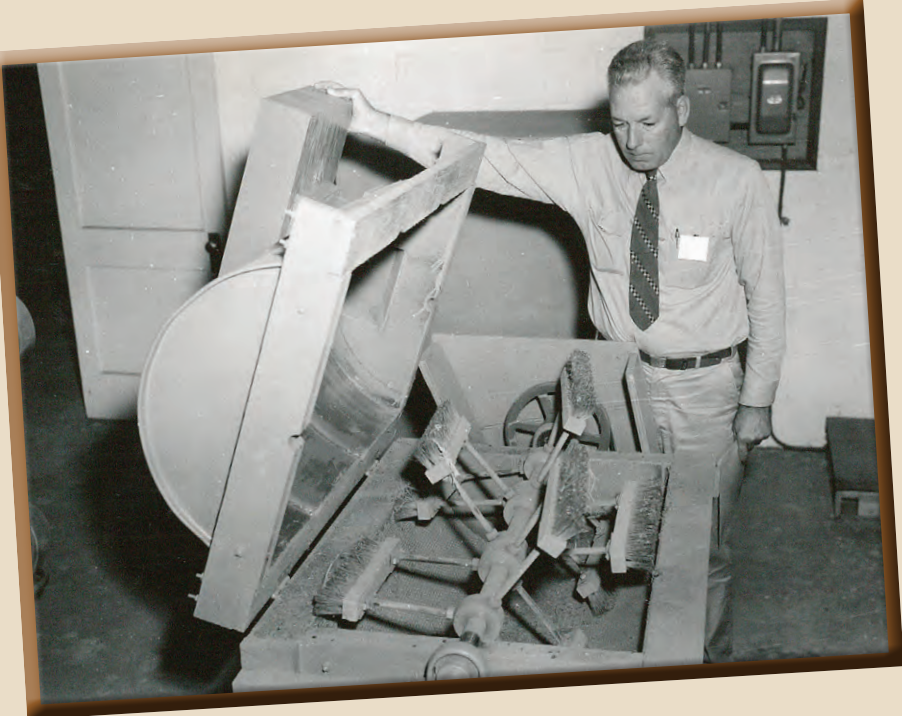


# Your Roots are in Virginia



Seed Dewatering at New Kent Nursery, Sept. 1955



Preparing the Seedbeds at the Charlottesville Nursery, 1953



Seedbed Shaper, circa 1948



New Kent Seed Orchard located in Providence Forge, Virginia, 1981



Feeding Cones into the Tumbler to Extract Seed at New Kent Nursery, Nov. 1955



Camp Collected 800 lbs. of Poplar Seed at Clintwood in Dickenson County, Nov. 1939



Cone Drying at New Kent Nursery, Oct. 1955



Lifting Loblolly Pine at New Kent Nursery, Nov. 1955



Sowing Seed at New Kent Nursery, 1960



Charlottesville Nursery, Dec. 1956



Sprinkler System in Operation at New Kent Nursery, 1960



Charlottesville Nursery Cone Building used for Drying Pine Cones and Extracting Seed, circa 1952



Weeding the Seedbeds at New Kent Nursery, Aug. 1956



Cones Piled on the Grounds, May 1959



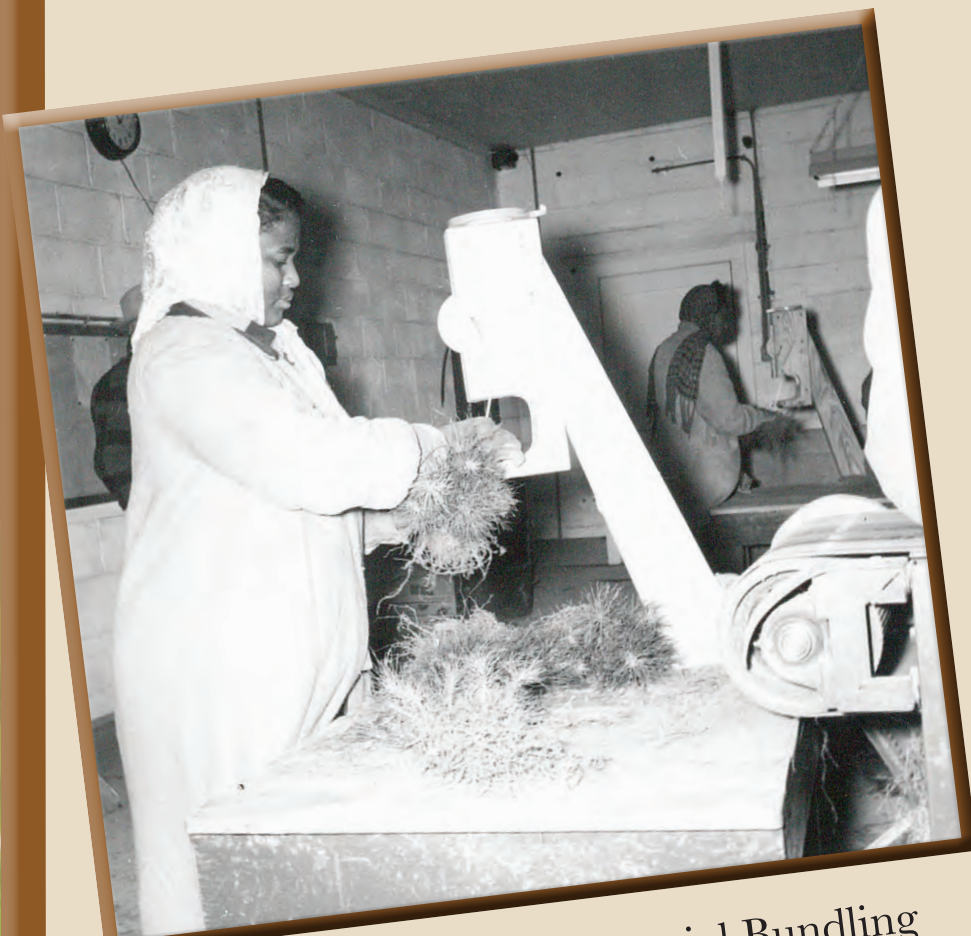
Grading Trees at New Kent Nursery, Nov. 1955



Lifting Loblolly Pine at New Kent Nursery, Nov. 1955



Tulip Poplar and Walnut Seedbeds at the Charlottesville Nursery, 1938



Bundling Seedlings with Special Bundling Tape at New Kent Nursery, Feb. 1957



Root Pruning Seedlings



Packing Room at New Kent Nursery, Dec. 1958



Counting Seedlings at Peary Nursery, Feb. 1951

